

THE HIGHMEADOW

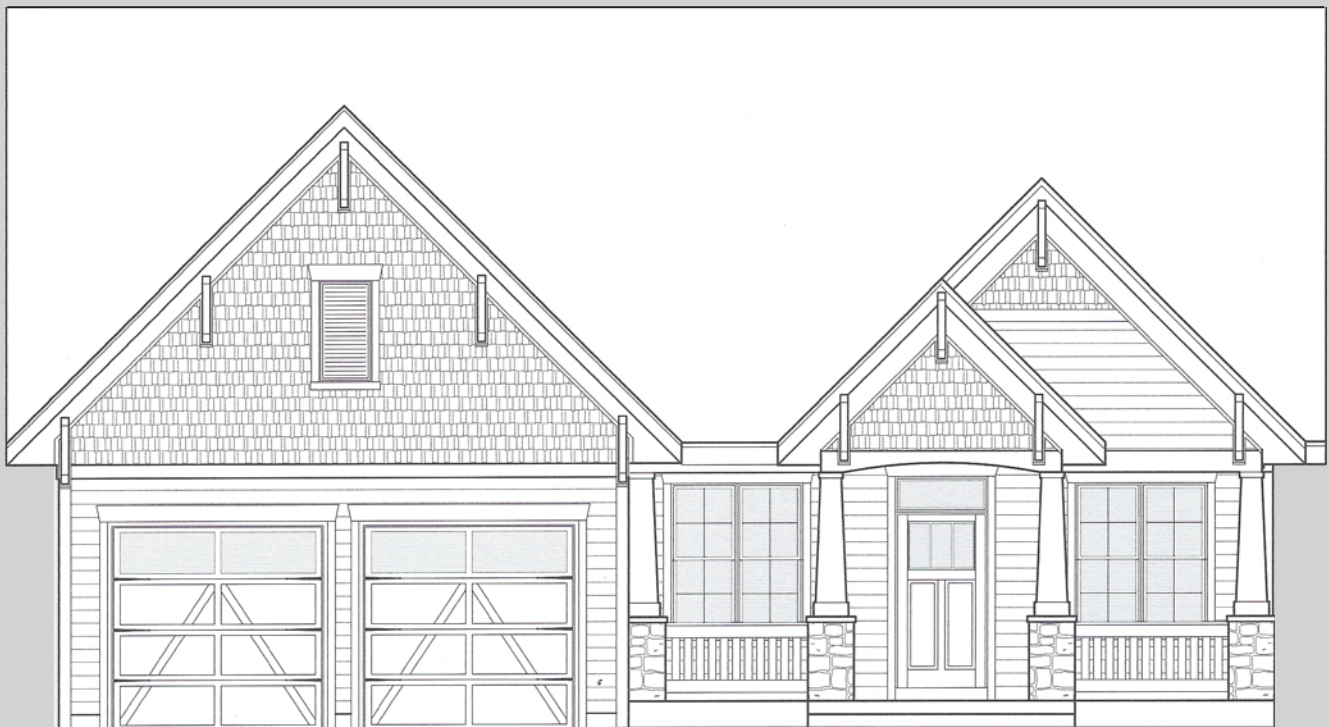
2 BEDROOMS, 2 BATHS PLUS DEN OR  
3 BEDROOMS, 2 BATHS

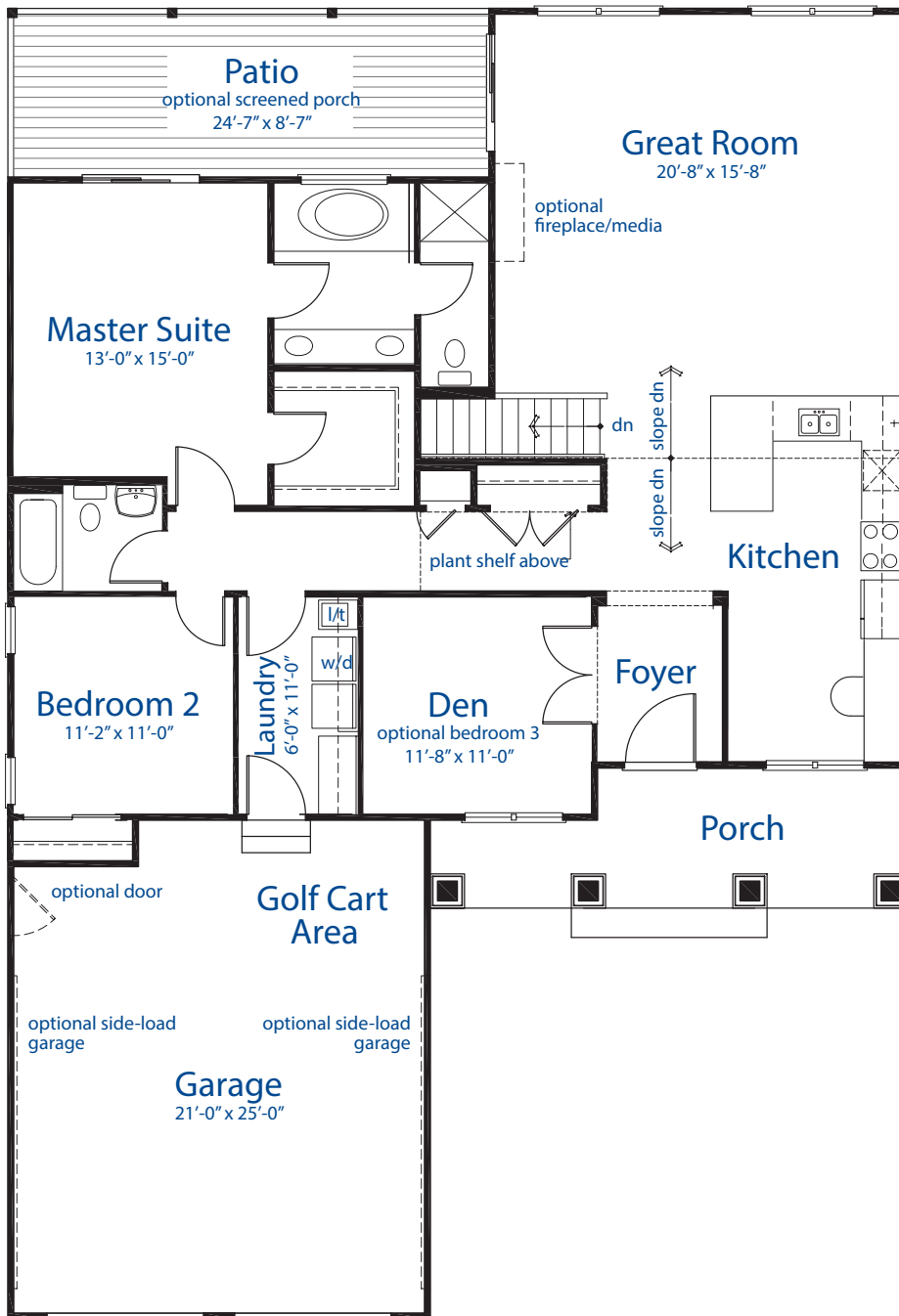
*Approximately 1,670 Square Feet*

FISHING RELAXATION BOAT



HIKING FAMILY SWIMMING





### SPECIAL FEATURES

- Beautifully-landscaped maintenance-free neighborhood with access to Newport Cove's private marina and waterfront amenities
- Charming cottage-style exteriors of easy-care concrete siding and stone
- Minimum 9-foot ceilings on main level, with numerous vaulted areas
- Large basement with 9-foot walls (*walk-out and look-out lower levels available on selected sites*)
- Luxury finishes, including hardwood flooring, eight-foot-tall doors, oversized trim and gourmet kitchens
- Many custom options

## THE HIGHMEADOW

*Approximately 1,670 Square Feet*

Plans and specifications are subject to change without notice